

COMFORT PRODUCT FOR ACUTE AND CHRONIC CORNEAL LESIONS



RGTA®: EXTRACELLULAR MATRIX SUBSTITUTE

Clerapliq®

EYE DROPS FOR PETS

- Easy to use
- 10 days of use
- Without preservative



JACK RUSSEL, MALE, 5 YEARS OLD



- Dog is presented at the consultation for a pain of the left eye evolving since 5 days.
- Superficial Epithelial ulcer interesting 30% corneal surface (fluorescein).
- Associated to serous blepharospasm and epiphora with a chemosis.
- Treatment with atropine (Atropine 0.5%® Alcon) 2 times a day for 3 days, a neomycin combination + polymyxin B (5 times daily for 7 days) and matrix regeneration agents (Clerapliq®).

— Complete healing at day 8

Dr Michaud B. Medical management of corneal ulcers. Use of RGTAs. 2013. L'Essentiel. 285, 16-24

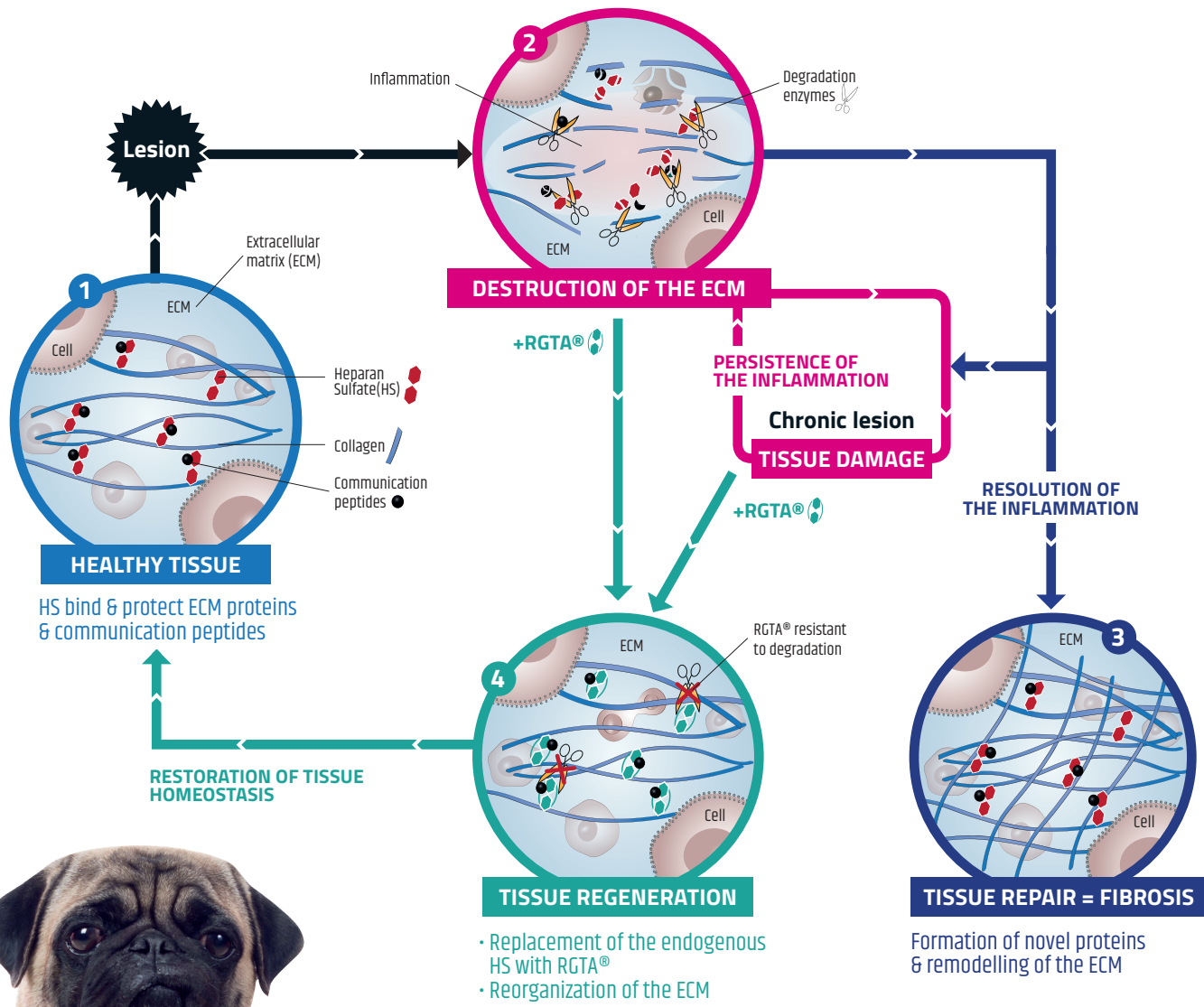
Easy to use
1 to 2 drops
2-3 times a week



It is not recommended to use the product daily. The duration of use can vary from one to several weeks

WHY use CLERAPLIQ®?	> TO REDUCE ANIMAL DISCOMFORT DURING CORNEAL WOUND CLOSURE
WHEN to use CLERAPLIQ®?	> AFTER SURGICAL WOUND, CORNEAL ULCERS « Prise en charge médicale des ulcères cornéens. » Essentiel VET Mars 2013 : N° 285
WHAT ANIMALS are concerned?	> CATS, DOGS, SPORT AND RACE HORSES, AND EXOTIC PETS
HOW to use CLERAPLIQ®?	> 1-2 DROPS PER EYE, EVERY 2 OR 3 DAYS
WHO can use CLERAPLIQ®?	> VETERINARIANS, PET OWNERS
HOW is CLERAPLIQ® positioned?	> CLERAPLIQ® IS A VETERINARY EYE HYGIENE PRODUCT, PLEASE CONSULT THE INSTRUCTION FOR USE

RGTA® (REGENERATING AGENT) MECHANISM OF ACTION



**Dermapliq®
Spray**

SKIN CARE FOR PETS



Clerapliq®

EYE DROPS FOR PETS

